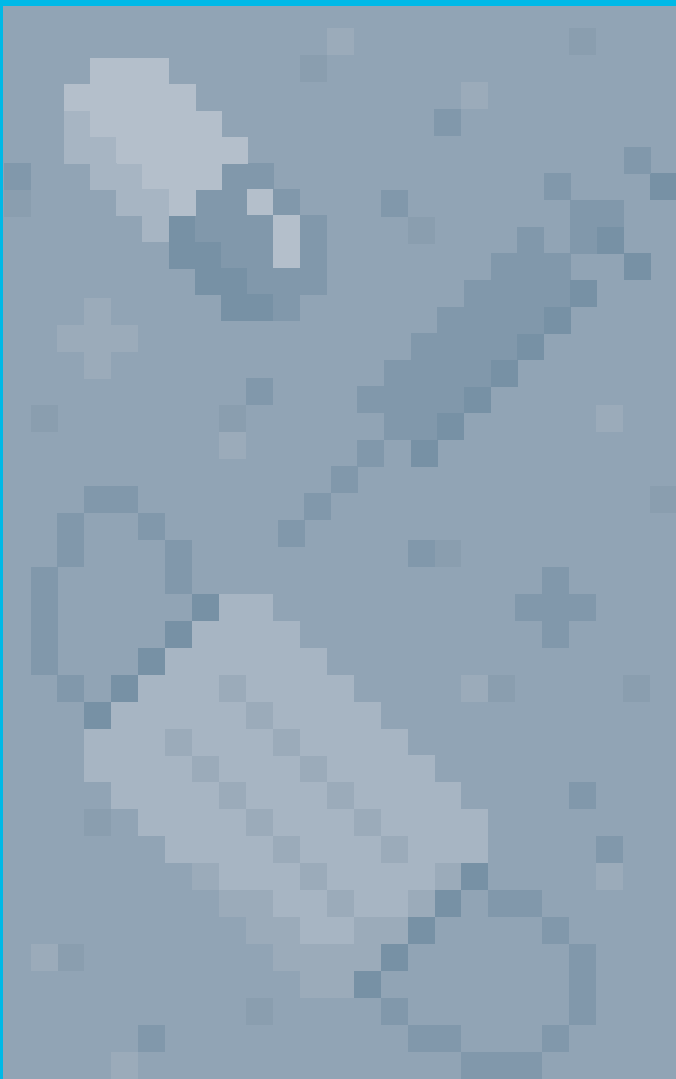


Master of Public Health (MPH)

First and only CEPH accredited programme in the region



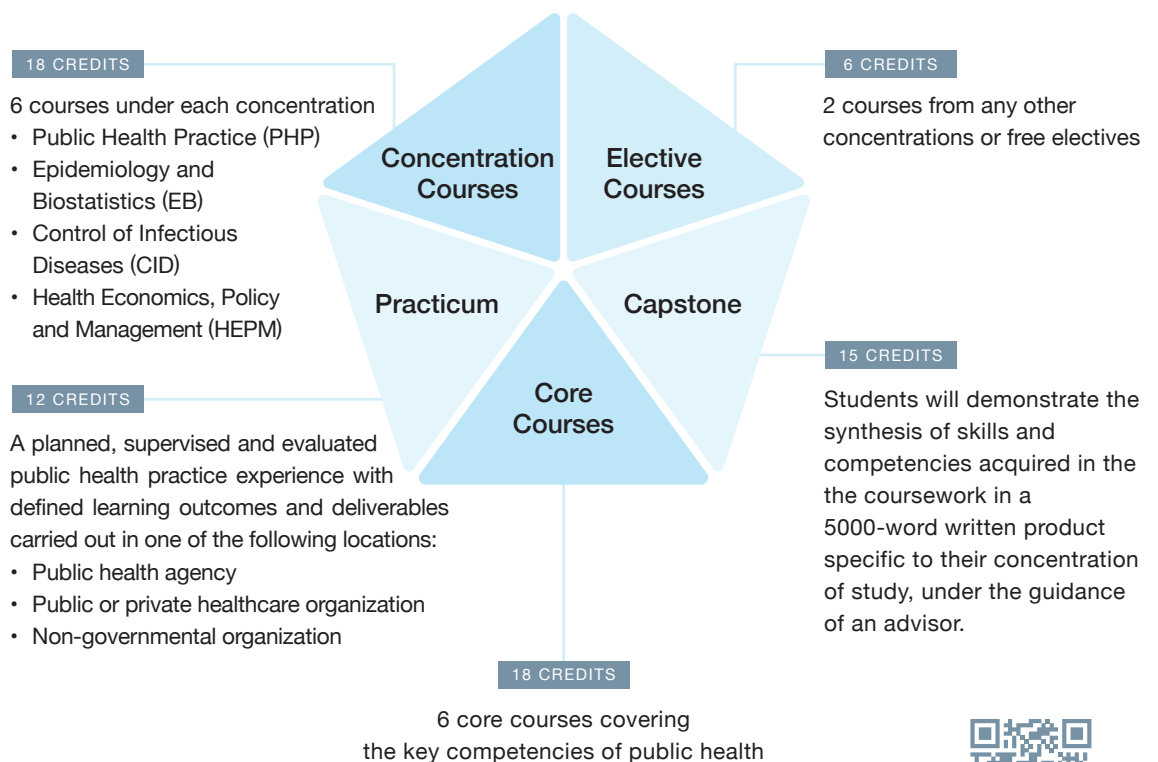
**HKU
Med**

LKS Faculty of Medicine
School of Public Health
香港大學公共衛生學院



Master of Public Health (MPH) programme equips students from diverse backgrounds and experience with the knowledge and competencies for the effective practice of public health and to become the next generation of public health leaders in order that public health issues and priorities are better understood, accepted and acted upon in Hong Kong, Asia and globally.

69-credit MPH Curriculum (1-year Full-time / 2-year Part-time)



MPH



Details on MPH curriculum

CEPH Accreditation

HKU MPH is the first in the region and the only academic programme in Hong Kong fully accredited by the USA's **Council on Education for Public Health (CEPH)**, the longest standing accrediting body of public health schools and programmes in the world.



CPH Credential

A CEPH-accredited MPH qualification leads to eligibility to sit for the **Certified in Public Health (CPH)** exam and obtain the CPH credential. Both the CPH exam and certification are administered by the USA's National Board of Public Health Examiner.



<https://ceph.org>

Exchange Opportunities

MPH students will have opportunities to undertake full-time studies and attend MPH or equivalent courses offered by our partner institutions. HKU will recognize the appropriate credits for the courses taken by students in the exchange programme.



<https://www.nbphe.org>

Quotable Qualification

The Medical Council of Hong Kong recognises the Master of Public Health, MPH(HK) as a quotable qualification.

The Hong Kong Academy of Medicine accredits Continuing Medical Education (CME) / Continuing Professional Development (CPD) points for the degree programme.

Admissions

For details about the procedures for application and tuition fee, please visit <https://www.mph.sph.hku.hk>



<https://www.mph.sph.hku.hk>

Tuition and Fees

Application Fee: HKD300
(Subject to change in each intake)

Tuition: HKD209,700 (USD26,900)





UGC Targeted TPg Programmes Fellowships

HKU MPH programme has been selected by the University Grants Council (UGC) to be part of the “Targeted Taught Postgraduate Programmes Fellowships Scheme” in recognition to the School’s strategic contribution to capacity building in Hong Kong.

30 local candidates admitted to the programme will be selected each year, each will receive an award of HK\$120,000 to offset the MPH tuition.

Scholarships

Chan Tung and Friends Global Community of Health for All Scholarship

2 scholarships (covering full tuition fee, round-trip airfare, living stipend, accommodation in university student residence) for students from low-income or lower-middle income countries as defined by the World Bank

Master of Public Health Entrance Scholarship for Psycho-Oncologists

1 full tuition scholarship for a psycho-oncologist to pursue public health studies with the aim of optimizing cancer care, especially psycho-social cancer care provisions

Honorary Teachers Scholarship

2 scholarships of HK\$30,000 each to be awarded on the basis of academic merit, community services and financial need

Professor Anthony J Hedley Scholarship for Master of Public Health

1 scholarship of HK\$30,000 to be awarded on the basis of academic merit, community services and financial need. Priority will be given to those with demonstrated interest and/or achievements in research or advocacy in environmental health

Naomi Molson Medical Scholarship

10 scholarships (covering full tuition fee, round-trip airfare, living stipend, accommodation in university student residence) for students with a first degree in medicine or equivalent from low-income or lower-middle-income Southeast Asian countries as defined by the World Bank

ADDRESS

G/F, Patrick Manson Building
(North Wing), 7 Sassoon Road,
Pokfulam, Hong Kong

EMAIL

mphsph@hku.hk

FOLLOW US

@ Instagram: [hkumph](#)

TEL

+852 3917 9140

WEBSITE

<https://www.mph.sph.hku.hk/>

